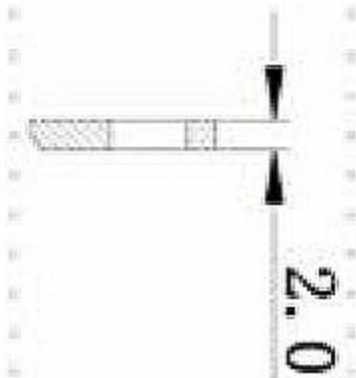


Type:

6-FM-18

VRLA Battery

Flame Retardant Case



Specifications

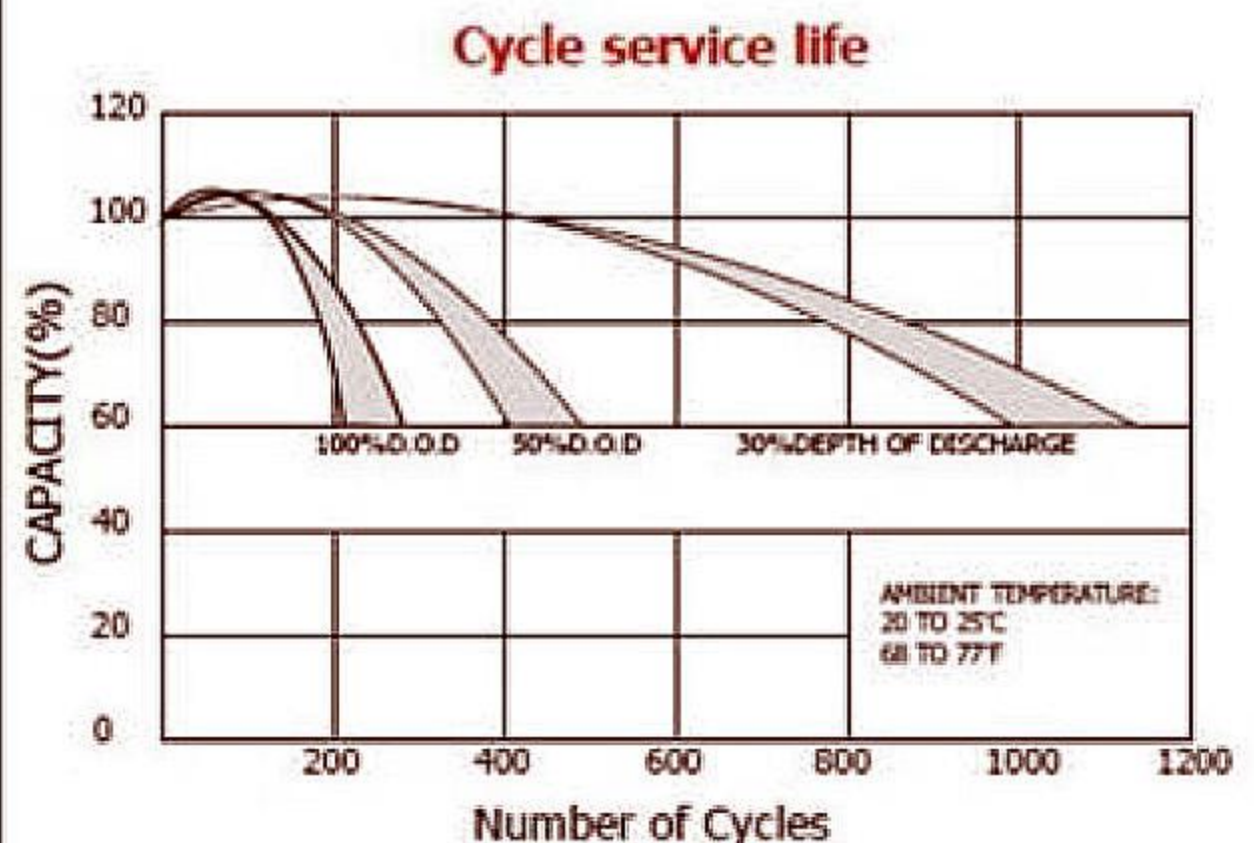
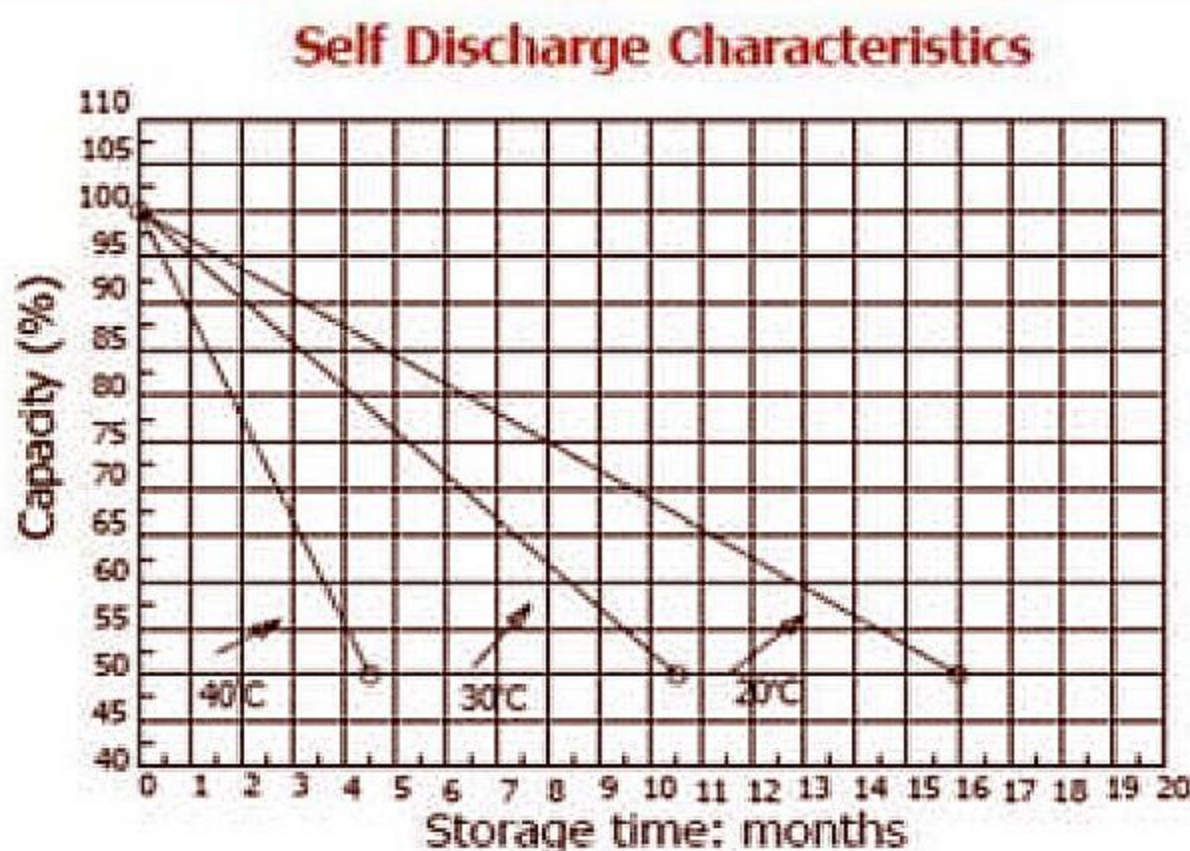
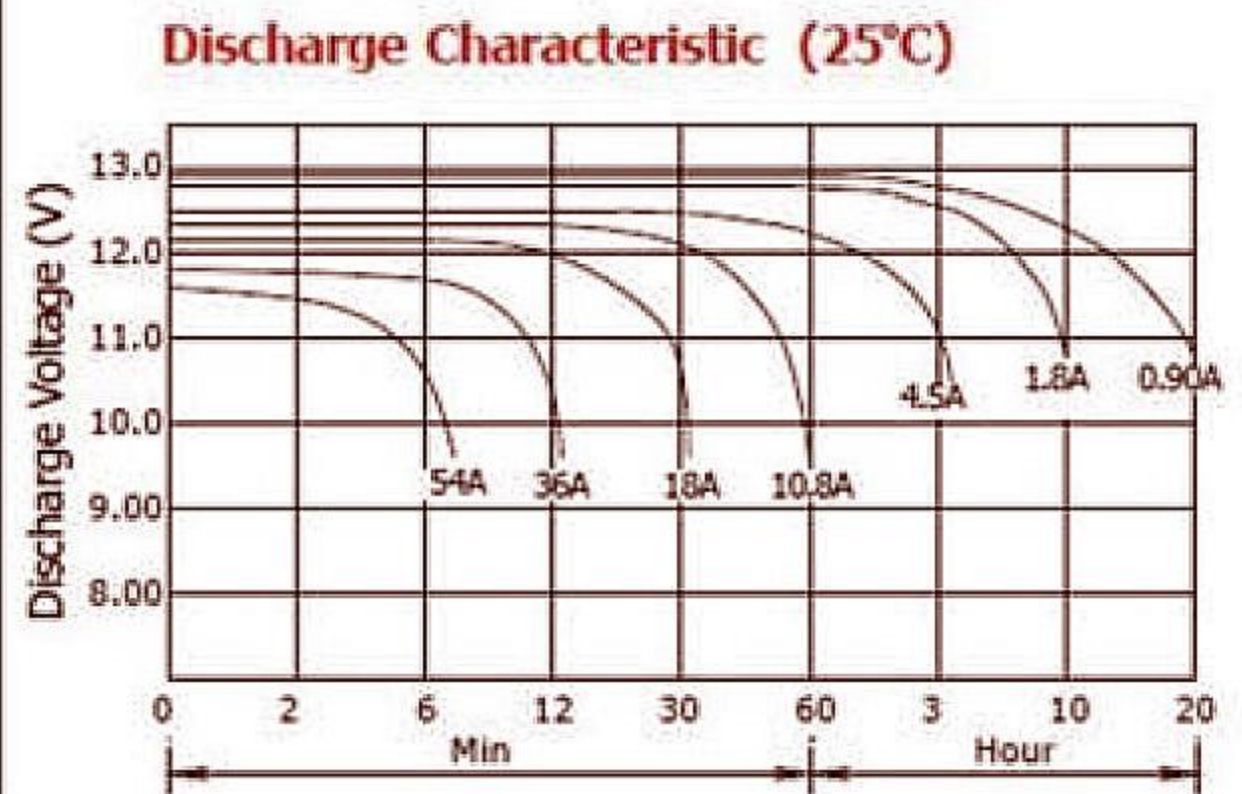
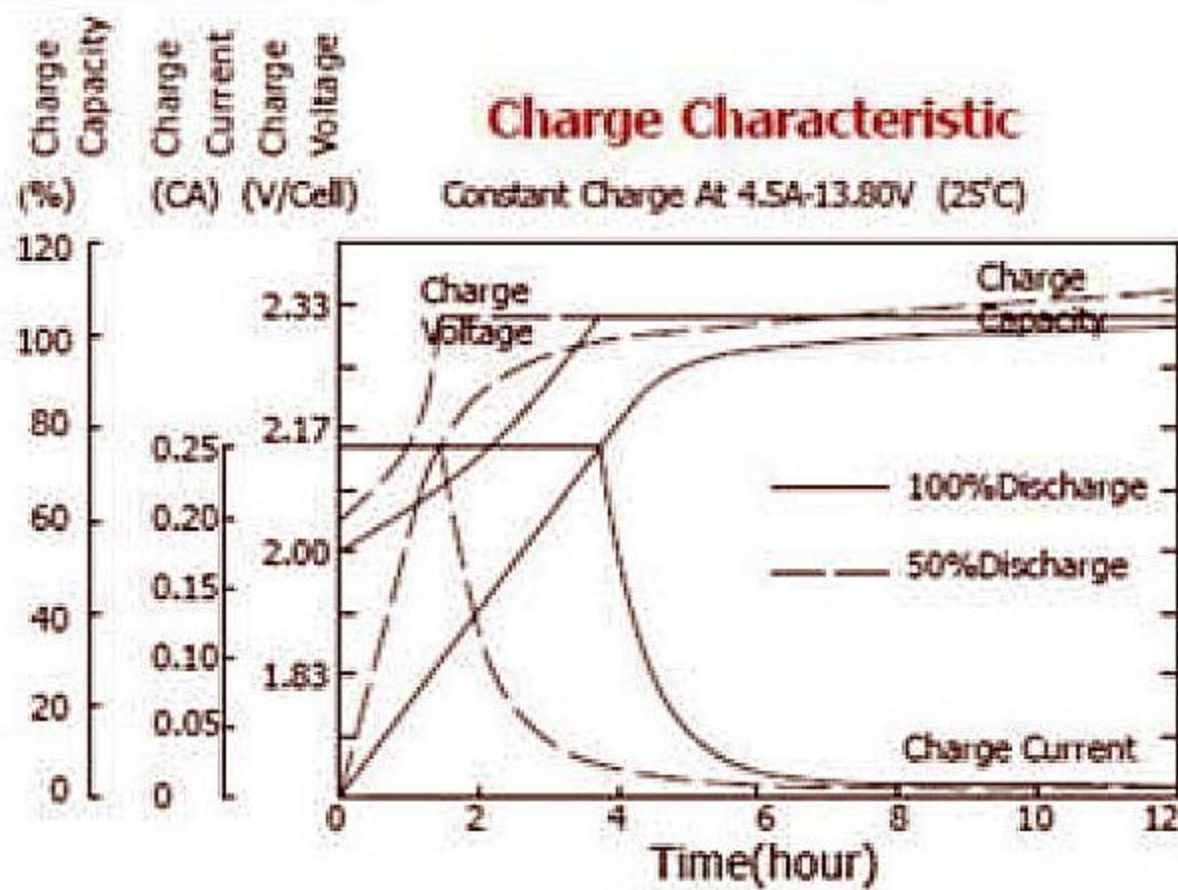
Nominal voltage	12V
Nominal capacity	18Ah (20hr, 25°C)
Approximate weight	5.7kg
Energy density	95.1 Wh/L
Specific energy	37.8 Wh/Kg
Internal resistance	10.4 mΩ
Terminals	Copper
Discharge temperature	-40°C ~ 50°C
Charge temperature	-20°C ~ 50°C
Storage temperature	-20°C ~ 40°C
Best range	15°C ~ 25°C
Equalizing charge	14.50 ~ 14.90V (25°C)
Float voltage	13.65 ~ 13.80V (25°C)
Self-discharge & storage	1Month: 98%
	3Month: 94%
	6Month: 86%
Case material	ABS (FLAME RETARDANT UL94)
Designed life	5 Years

Constant current discharge ratings 25°C

End Voltage	5min	10min	15min	30min	45min	1hr	2hr	3hr	4hr	5hr	10hr	20hr
1.60V	70.3	43.8	33.9	19.8	15.3	12.1	6.90	5.05	4.09	3.28	1.79	0.97
1.65V	66.0	41.5	33.7	19.7	15.1	11.9	6.82	4.86	4.07	3.24	1.77	0.95
1.70V	60.5	40.0	32.9	19.5	14.9	11.0	6.75	4.82	3.98	3.19	1.76	0.94
1.75V	59.3	38.8	31.9	19.0	14.6	10.8	6.66	4.75	3.96	3.14	1.74	0.93
1.80V	53.0	37.0	30.3	18.5	14.2	10.4	6.56	4.66	3.92	3.08	1.72	0.91
1.85V	46.8	35.3	28.8	17.57	13.49	9.88	6.23	4.42	3.72	2.92	1.63	0.86

Constant power discharge ratings 25°C

End Voltage	5min	10min	15min	30min	45min	1hr	2hr	3hr	4hr	5hr	10hr	20hr
1.60V	123.0	79.0	57.2	37.83	29.83	24.16	13.6	9.35	8.28	6.31	3.35	1.93
1.65V	119.0	77.0	56.5	37.33	29.33	23.50	13.56	9.3	7.91	6.25	3.28	1.9
1.70V	112.0	76.3	55.5	37.0	29.00	23.33	13.36	9.16	7.56	6.23	3.26	1.88
1.75V	108.0	76.0	54.5	36.66	28.66	23.16	13.18	9.11	7.36	6.2	3.25	1.85
1.80V	103.0	74.9	53.2	36.16	28.16	22.83	13.05	8.93	7.01	6.13	3.23	1.81
1.85V	93.6	71.0	51.9	34.35	26.75	21.68	12.39	8.48	6.65	5.82	3.06	1.71



تهران - خیابان مطهری - خیابان مهرداد - نرسیده به خیابان اصلی پور - ساختمان تسلا



021-88860000

WWW.TESLAUPS.IR

